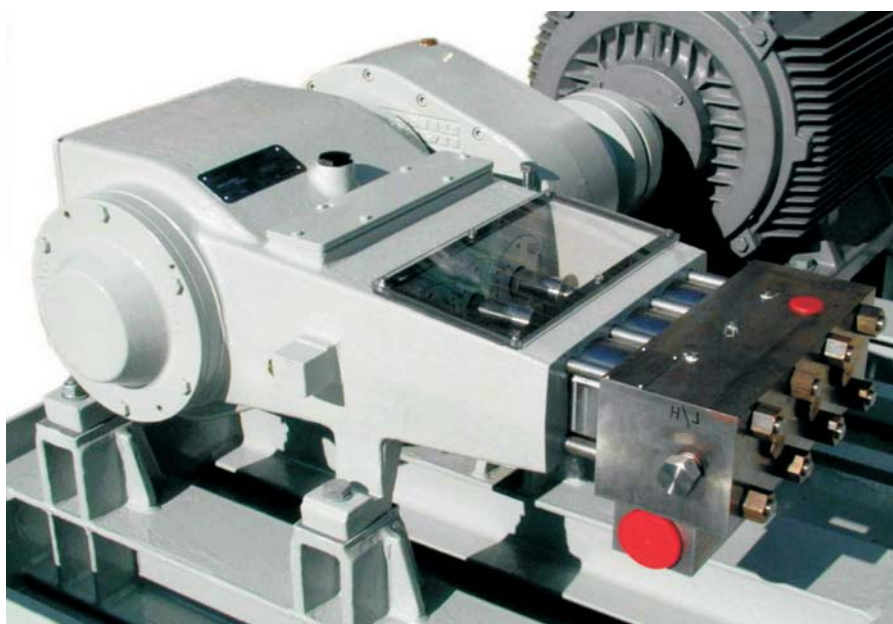




HPS2000

HIGH PRESSURE TRIPLEX PUMP



Features:

- * Robust, rugged and reliable
- * Versatile (interchangeable fluid heads and plunger kits)
- * Stainless steel fluid heads (431 standard or 316)
- * 110 kW (150 hp) input
- * Variable speed duties
- * Forged alloy steel crankshaft with heavy duty roller type main bearings
- * Large capacity SG iron crankcase with splash lubrication
- * SG iron connecting rods with low friction, shell type big end bearings and lead bronze lined small end bushes

Pump Head Type	Plungers (High Pressure)						Plungers (Intermediate)			Pistons (High Volume)	
	22	24	26	28	30	35	40	45	50	55	60
Diameter - mm	22	24	26	28	30	35	40	45	50	55	60
Input Power - kW	75	90	105	105			105			105	
Pump Speed - rpm	350						350			350	
Flow Rate - l/min	40	48	56	65	74	101	132	167	206	250	296
Pressure - bar	1000			850	744	545	420	330	270	220	185

Flow Rates indicated are swept volume at maximum speed

The HPS2000 is the descendent of the world renowned Jetin 2000 pump.

Retaining the same, robust crankcase and gearbox, the HPS2000 includes an up-dated and up-rated fluid head and plunger arrangement using an advanced seal configuration.

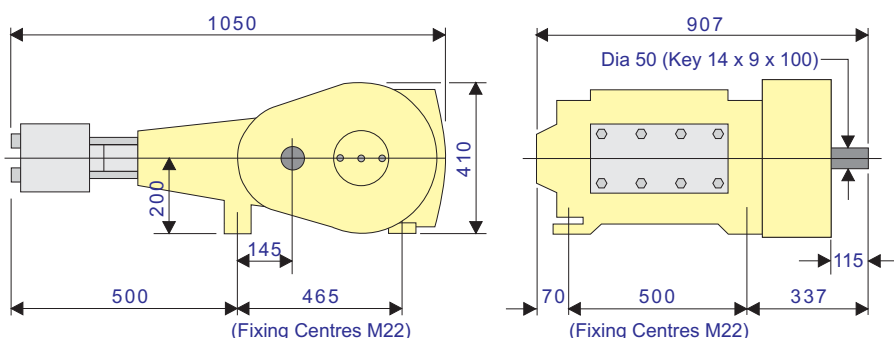
This improved design is capable of high pressure to high volume with outstanding seal, plunger and valve life.

For maximum hydraulic efficiency, the in-line valve arrangement is designed to minimise the unswept volume.

Build Options:

- * Choice of gear ratio to suit electric motor or diesel engine drive
- * Piston kits for high volume applications
- * Safety relief valves
- * Unloading valves
- * Selector/Diverter valves (manual or actuated)
- * Complete unit build or bare shaft pump only

General Dimensions - typical pump build



Approx weight - 500 kg (with gearbox)



PUMPS LTD

Highfield Works, Spring Gardens
Washington, W. Sussex, UK RH20 3BS

Tel: +44 (0) 1903 892358 Fax: +44 (0) 1903 892062

Website: www.hughes-pumps.co.uk
Email: enquiries@hughes-pumps.co.uk

In line with the Company's policy of research and development, alterations in design, dimensions and appearance are incorporated from time to time in order to ensure that important developments are included at the earliest opportunity. The Company, therefore, reserves the right to alter design, dimensions etc without notice.