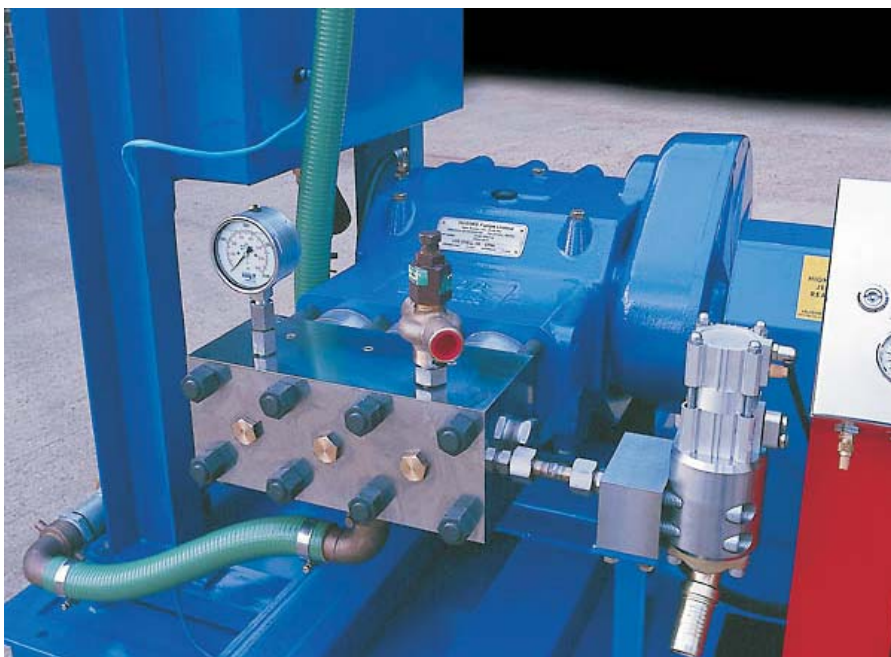




HPS3000

HIGH PRESSURE TRIPLEX PUMP



Features:

- * Robust, rugged and reliable
- * Versatile (interchangeable fluid heads and plunger kits)
- * Stainless steel fluid heads (431 standard or 316)
- * 225 kW (300 hp) input
- * Hardened, alloy steel crankshaft with heavy duty, steel backed white metal main bearings, supported between each connecting rod
- * SG iron crankcase with pressure lubrication, filtration and oil cooling
- * Forged connecting rods with low friction, shell type big end bearings and lead bronze lined small end bushes

Build Options:

- * Choice of gear ratio to suit electric motor or diesel engine drive
- * Standard adaptor housing (SAE 1) for flange mounting the pump to a diesel engine flywheel housing or electric motor
- * Piston kits for high volume applications
- * Safety relief valves
- * Unloading valves
- * Selector/Diverter valves (manual or actuated)
- * Complete unit build or bare shaft pump only



P U M P S L T D

Highfield Works, Spring Gardens
Washington, W. Sussex, UK RH20 3BS

Tel: +44 (0) 1903 892358 Fax: +44 (0) 1903 892062

Website: www.hughes-pumps.co.uk
Email: enquiries@hughes-pumps.co.uk

In line with the Company's policy of research and development, alterations in design, dimensions and appearance are incorporated from time to time in order to ensure that important developments are included at the earliest opportunity. The Company, therefore, reserves the right to alter design, dimensions etc without notice.

Pump Head Type	Very High Pressure			Standard				High Volume			
Diameter - mm	25	30	35	40	45	50	55	60	65	70	75
Input Power - kW	145	210	190	225				225			
Pump Speed - rpm	350			350				350			
Flow Rate - l/min	51	74	101	132	167	206	249	297	348	404	464
Pressure - bar	1500		1000	920	728	590	488	409	349	300	262

Flow Rates indicated are swept volume at maximum speed

A robust design, the HPS3000 has a specification producing a heavy duty capability for dealing with the more difficult problems of industry.

The close coupled, gear driven power end has pressure lubrication, filtration and oil cooling. A standard adaptor housing is available enabling the pump to be flange mounted to a diesel engine flywheel housing or electric motor ensuring extremely

compact and perfectly aligned installations.

For maximum hydraulic efficiency, the in-line valve pump head arrangement is designed to minimise the unswept volume.

This improved design is capable of high pressure to high volume with outstanding seal, plunger and valve life.

General Dimensions - typical pump build

