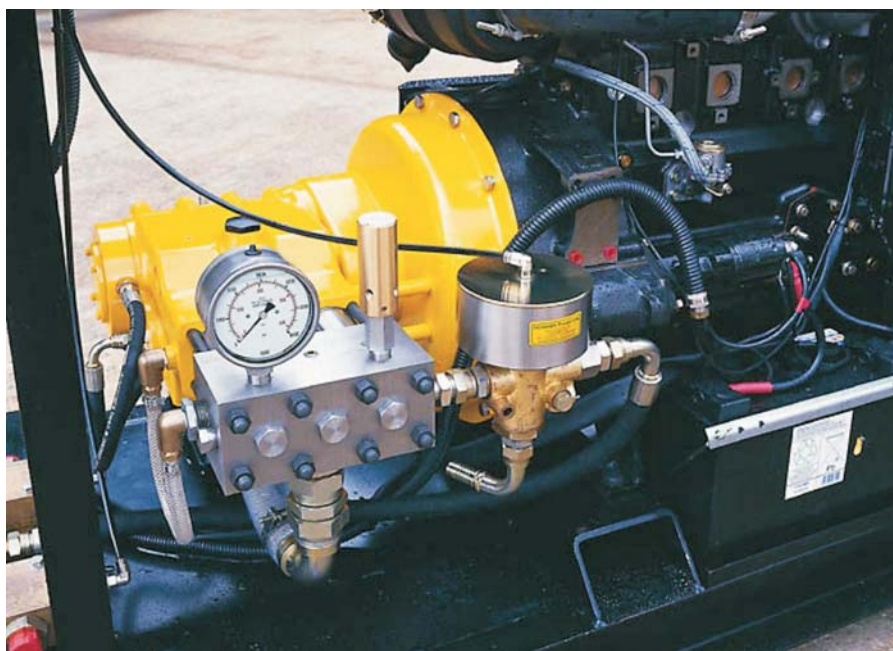




HPS650

HIGH PRESSURE TRIPLEX PUMP (40 mm stroke)



Pump Head Type	Plungers (High Pressure)						Pistons (High Volume)	
	20	22	25	28	30	35	40	45
Diameter - mm	20	22	25	28	30	35	40	45
Max Power - kW	48						48	
Pump Speed - rpm	750						750	
Flow Rate - l/min	28.3	34.2	44.2	55.4	63.6	86.6	113	143
Pressure - bar (30 kW)	573	473	367	292	255	187	143	113
Pressure - bar (37 kW)	707	584	452	360	314	231	177	140
Pressure - bar (40 kW)	765	630	490	390	340	250	190	150
Pressure - bar (45 kW)	815	673	522	416	362	266	204	161

Flow Rates indicated are swept volume at maximum speed (stroke length 40 mm)

The versatile HPS650 model offers a wide range of flows and pressures at a competitive price.

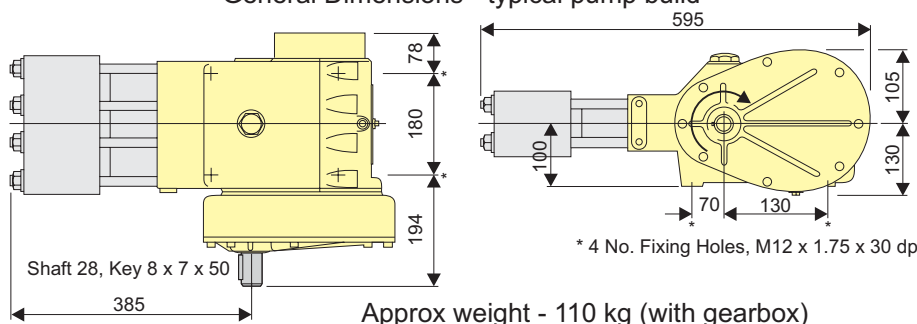
The close coupled, gear driven power end has splash lubrication and oil cooling. Standard adaptor housings are available enabling the pump to be flange mounted to a diesel engine flywheel housing or electric motor ensuring extremely compact and

perfectly aligned installations.

For maximum hydraulic efficiency, the in-line valve pump head arrangement is designed to minimise the unswept volume.

This improved design is capable of high pressure to high volume with outstanding seal, plunger and valve life.

General Dimensions - typical pump build



Features:

- * Robust, rugged and reliable
- * Versatile (interchangeable fluid heads and plunger kits)
- * Stainless steel fluid heads (431 standard or 316)
- * 48 kW (65 hp) input
- * Hardened, alloy steel crankshaft with heavy duty roller and steel backed white metal main bearings, supported between each connecting rod
- * SG iron crankcase with splash lubrication and oil cooling
- * Forged connecting rods with low friction, shell type big end bearings and lead bronze lined small end bushes

Build Options:

- * Choice of gear ratio to suit electric motor or diesel engine drive
- * Standard adaptor housings (SAE 3, 4 or 5) for flange mounting the pump to a diesel engine flywheel housing or electric motor
- * Piston kits for high volume applications
- * Safety relief valves
- * Unloading valves
- * Selector/Diverter valves (manual or actuated)
- * Complete unit build or bare shaft pump only



P U M P S L T D

Highfield Works, Spring Gardens
Washington, W. Sussex, UK RH20 3BS

Tel: +44 (0) 1903 892358 Fax: +44 (0) 1903 892062

Website: www.hughes-pumps.co.uk
Email: enquiries@hughes-pumps.co.uk

In line with the Company's policy of research and development, alterations in design, dimensions and appearance are incorporated from time to time in order to ensure that important developments are included at the earliest opportunity. The Company, therefore, reserves the right to alter design, dimensions etc without notice.