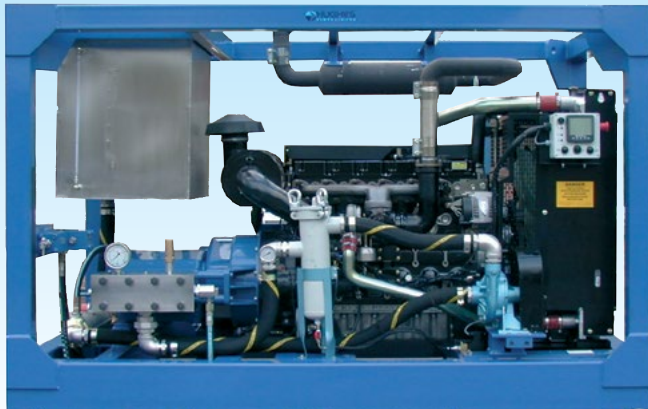


HPS2200 DC HP Water Jetting Unit




High & Ultra High Pressure Technology



Features

- HPS2200 pump with pressure lubrication & oil cooling. Stainless steel pumphead, solid ceramic plungers, integral gearbox & SAE adaptor housing.
- Glycerine filled pressure gauge & safety relief valve
- Perkins 6 cylinder, emissions compliant engine, with simple auto shutdown control panel
- Boost pump, high capacity stainless steel filter housing with 50 micron element, heavy duty suction line hose, stainless steel fittings & boost pressure switch.
- Stainless steel water tank

Build Options

- Unloader / pressure adjusting valve for multi-tool operation
- Spark arresting silencer & Chalwyn valve
- Rigsafe or Zone 2 engine build
- ATEX compliant 
- Certified crashframes
- Alternative engines
- Zinc rich powder coated paint finish for corrosive environments
- High volume builds to 231 lpm at 380 bar (50.9 igpm / 61.3 usgpm at 5,510 psi)
- Comprehensive range of accessories to cover every application

110 kW (150 hp) Model

42 lpm at 1400 bar
(9.2 igpm / 11.1 usgpm at 20,300 psi)

59 lpm at 1000 bar
(13.1 igpm / 15.8 usgpm at 14,500 psi)

75 lpm at 800 bar
(16.6 igpm / 20.0 usgpm at 11,600 psi)

89 lpm at 700 bar
(19.6 igpm / 23.6 usgpm at 10,150 psi)

160 kW (220 hp) Model

53 lpm at 1400 bar
(11.7 igpm / 14.1 usgpm at 20,300 psi)

83 lpm at 1000 bar
(18.3 igpm / 22.0 usgpm at 14,500 psi)

89 lpm at 800 bar
(19.6 igpm / 23.6 usgpm at 11,600 psi)

116 lpm at 700 bar
(25.6 igpm / 30.8 usgpm at 10,150 psi)

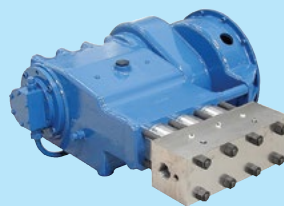
Refer to HPS2200 pump data sheet for full range of performances

HPS2200, diesel engine driven, fully enclosed, road trailer mounted, High Pressure water jetting unit, suitable for the most demanding applications. Simple to operate & maintain, this is probably the most user friendly HP unit on the market.

Suitable for single or multi gun / footvalve operation. Applications include surface cleaning / de-scaling, coatings removal, hydro-demolition, heat exchanger / pipe cleaning, vessel cleaning, sub-sea cleaning / cutting & floor, road & runway cleaning.

Dimensions :
2.5m long x 1.5m wide x 1.6m high
(98" long x 59" wide x 63" high)

Weight :
2,080 kg (4,567 lb)



HPS2200 pump with SAE engine adapter



Concrete cutting - 59lpm / 1000 bar

Hughes Pumps Limited

Spring Gardens, Washington, West Sussex, RH20 3BS UK

Tel: +44 (0) 1903 892358 Fax: +44(0) 1903 892062

www.hughes-pumps.co.uk sales@hughes-pumps.co.uk



In line with the Company's policy of research and development, alterations in design, dimensions and appearance are incorporated from time to time in order to ensure that important developments are included at the earliest opportunity. The Company, therefore, reserves the right to alter design, dimensions etc without notice.