

HP500 EC HP Water Jetting Unit



355kW (475hp) Motor	
50Hz	60Hz
166lpm at 1000bar (43.9gpm at 14,500psi)	199lpm at 900bar (52.7gpm at 13,050psi)
129lpm at 1400bar (34.2gpm at 20,300psi)	124lpm at 1400bar (32.9gpm at 20,300psi)

400kW (535hp) Motor	
50Hz	60Hz
207lpm at 1000bar (54.9gpm at 14,500psi)	199lpm at 1000bar (52.7gpm at 14,500psi)

Refer to the HP500 pump data sheet for alternative performances

HP500 EC crashframe mounted, electric motor driven, High Pressure water jetting unit.

Suitable for a range of applications including surface cleaning, descaling, heat exchanger / pipe cleaning, vessel cleaning, subsea cleaning and more.

Dimensions (approx.)

2.8m long x 1.6m wide x 1.9m high
(110" long x 63" wide x 75" high)

Weight (approx.)

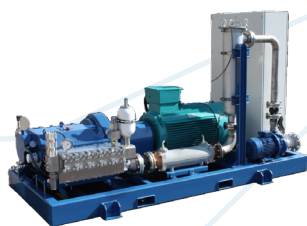
4,650kg
(10,230lb)

Features

- HP500 five cylinder pump with pressure lubrication & oil cooling
- Stainless steel pumphead, solid carbide plungers & integral gearbox
- Transducer or analogue pressure gauge for display of discharge pressure
- Burst disc assembly (or safety valve)
- IE3, foot mount, 4 pole electric motor. IP55, Class F insulation, Class B rise, TEFC. Fitted with PTC thermistors. Suitable for 400v/3ph/50Hz & 480v/3ph/60Hz.
- Pump switches for low inlet pressure, low oil pressure & high oil temperature
- Stainless steel water tank, boost pump & dual filtration
- Star delta starter control panel c/w interlocked isolator, start/stop buttons, hours counter, shutdown circuit for pump switches & E-stop. PILZ safety relay & terminals for a remote E- stop. Mounted in a coated sheet steel enclosure with a IP65 rating.
- Manual pressure adjusting valve
- Fabrications are grit blasted & powder coated with a zinc rich primer & durable topcoat suitable for use in corrosive environments

Build Options

- Pneumatic control valve
- Air compressor
- The modular design allows any combination of chassis to be configured including Skids, Crashframes, Site Trailers (Trolleys), with or without Enclosures
- Certified crashframe
- Mounted in a 10' container (standard or DNV)
- ATEX Zone 1 or 2 electric motors & starter panels
- Full range of accessories for all applications



Skid Option
(less water tank)



Enclosed crashframe option



Site trailer option

Hughes Pumps Limited
Spring Gardens,
Washington, West Sussex,
RH20 3BS
United Kingdom

Telephone +44 (0) 1903 892358
Email sales@hughes-pumps.co.uk
Web www.hughes-pumps.co.uk



Certification number 4257



Manufactured in the UK since 1970

In line with the company's policy of research and development, alterations in design, dimensions and appearance are incorporated from time to time in order to ensure important developments are included at the earliest opportunity. The Company, therefore, reserves the right to alter design, dimensions etc without notice.