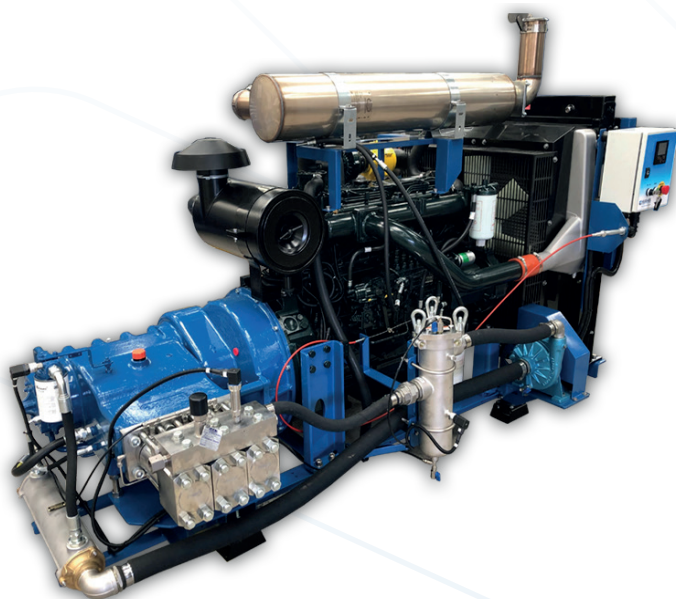


Ultrabar 30 Subframe

UHP Water Jetting Unit



Doosan PU086TI Engine (197kW/265hp)

44lpm at 2000bar
(11.6gpm at 29,000psi)

30lpm at 2800bar
(7.9gpm at 40,600psi)

Refer to the Ultrabar 30 pump data sheet for alternative performances

Ultrabar 30 subframe mounted, diesel driven, High Pressure water jetting unit. Ideal for system packagers or end-users wishing to integrate this module into their own chassis design. All that needs to be added are diesel & water tanks & a main chassis (if required).

Simple mechanical engine suitable for use in non-regulated regions of the world, making this unit very easy to operate and maintain. Suitable for single or twin gun / footvalve operation. Applications include surface cleaning, descaling, hydro-demolition, heat exchanger pipe cleaning, vessel cleaning, subsea cleaning and more.

Features

- Ultrabar 30 pump with pressure lubrication & oil cooling
- Integral gearbox & SAE engine adaptor
- Modular fluid head assembly allows easy maintenance & troubleshooting on individual cylinders.
- Solid carbide plungers & self-adjusting seals.
- Transducer for display of discharge pressure & automatic over-pressure shutdown
- Burst disc assembly
- Doosan 6 cylinder, mechanical engine suitable for use in non-regulated regions of the world (not Europe/North America)
- Simple auto-shutdown control panel.
- Battery assembly
- Pump switches for low inlet pressure, low oil pressure & high oil temperature
- Boost pump & dual filtration
- Subframe is grit blasted & powder coated with a zinc rich primer & durable topcoat suitable for use in corrosive environments

Dimensions

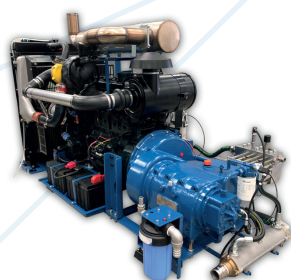
2.5m long x 1.25m wide x 1.6m high
(98" long x 49" wide x 63" high)

Weight

1,800kg
(3,960lb)
PU086TI Version

Build Options

- Spark arresting exhaust silencer
- Chalwyn valve
- Alternative engines (Tier 3, 4 & 5)
- Full range of accessories for all applications



Rear View



Unit during test

Hughes Pumps Limited
Spring Gardens,
Washington, West Sussex,
RH20 3BS
United Kingdom

Telephone +44 (0) 1903 892358
Email sales@hughes-pumps.co.uk
Web www.hughes-pumps.co.uk



Certification number 4257



Manufactured in the UK since 1970

In line with the company's policy of research and development, alterations in design, dimensions and appearance are incorporated from time to time in order to ensure important developments are included at the earliest opportunity. The Company, therefore, reserves the right to alter design, dimensions etc without notice.