

Application Data

Surface preparation



Benefits of Water Jetting

- Dust free allowing other trades to work in the vicinity
- Minimal waste disposal, 98% less than grit blasting
- Environmentally friendly
- No contamination of sensitive rotating equipment
- In marine environments removes all chlorides from substrate leaving a perfect surface for new paint
- Unlike grit blasting does not profile steel so does not trap chloride contaminants in the substrate
- Minimal water consumption, most of which evaporates
- Reduces time during dry-docking
- Sheetting not required
- Can be used in wet & windy conditions
- The pump is versatile & can be used for other cleaning & cutting applications

Typical Pumps & Performances

Pump	Performance	Application
Ultrabar 10	10lpm at 2600bar (2.8gpm at 38,000psi)	Single gun, spot blasting small areas, typically offshore
Ultrabar 15	14lpm at 2750bar (3.7gpm at 40,000psi)	Single gun, medium duty industrial surface preparation
Ultrabar 24	23lpm at 2750bar (6.1gpm at 40,000psi)	Single or twin gun or with a crawler, heavy duty industrial surface preparation

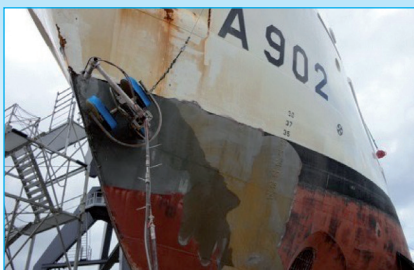
Surface preparation generally refers to the stripping of coatings & corrosion using Ultra High Pressure (UHP) water jetting equipment at 2000-3000bar (30,000-43,500psi). At these pressures the velocity of the water jet is 500-600m/sec (Mach 1/speed of sound is 340 m/sec) which will strip the toughest of coatings with plain, fresh water.

Hughes Pumps manufactures a range of UHP pumps to cater for various

surface preparation tasks, from the compact UB10, single gun unit for blasting small areas typically offshore on oil & gas platforms or on ships during voyage where space & fresh water are at a premium, through to the larger UB24 which can be used with single or twin jetting guns or with an automated crawler for stripping large areas, typically ships hulls & oil storage tanks.



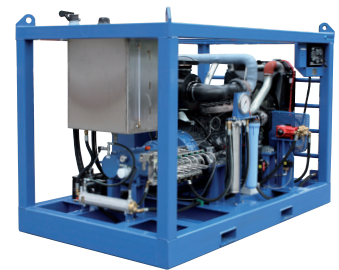
Ultrabar 10EC Offshore unit



Ultrabar 24DC unit with Verti-Blast crawler



Ultrabar 24DC with twin gun operation



Ultrabar 24DC unit

This information is intended to be a guide only. The required pump size & performance can vary depending on many factors including rate of work required, hardness of deposit or work piece, operator skill, site access etc.

Hughes Pumps Limited

Spring Gardens, Washington, West Sussex, RH20 3BS UK
Tel: +44 (0) 1903 892358 **Fax:** +44(0) 1903 892062
www.hughes-pumps.co.uk **sales@hughes-pumps.co.uk**



Certificate Number 4257

In line with the Company's policy of research and development, alterations in design, dimensions and appearance are incorporated from time to time in order to ensure that important developments are included at the earliest opportunity. The Company, therefore, reserves the right to alter design, dimensions etc without notice.