

# Application Data

## Tank/Vessel cleaning



### Benefits of Water Jetting

- Non-man entry & totally safe
- Best H&S practice
- Environmentally friendly, only uses water
- No chemicals to dispose of
- Tanks of any diameter can be cleaned by using positioning booms to keep the nozzle close to the tank wall
- The tank cleaning head is fully adjustable to ensure all surfaces are cleaned
- High quality water jets can travel some distance
- Water jets will not damage steel or glass lined vessels
- Reduced cleaning time
- The pump is versatile & can be used for other cleaning & cutting applications

### Typical Pumps & Performances

Pump	Performance	Application
<b>HPS1000</b>	<b>100lpm at 350bar</b> (26gpm at 5,000psi) <b>55lpm at 700bar</b> (15gpm at 10,000psi)	Cleaning smaller tanks with soft deposits
<b>HPS2200</b>	<b>228lpm at 380bar</b> (60gpm at 5,500psi) <b>83lpm at 1000bar</b> (22gpm at 14,500psi)	Cleaning larger diameter tanks &/or with tougher deposits

Any industry that uses tanks, vessels, autoclaves, driers etc. for mixing, processing or drying products can benefit by using a Hughes Pumps non-man entry, automatic tank/vessel cleaning system.

Historically personnel with PPE & breathing apparatus would enter the tank & manually clean using pressure washers. With more emphasis on Health & Safety, we have developed systems that include one of our high pressure pumpsets that feeds a tank cleaning nozzle which is water

powered & rotates in two planes to bring about total, automatic cleaning of the entire tank surface. The nozzle has adjustable rpm which enables the cleaning cycle to be adjusted between 5-60 minutes.

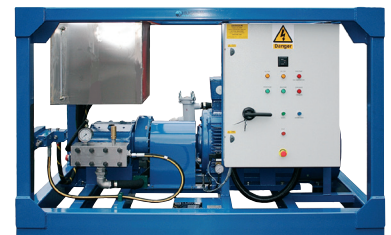
The nozzle can be lowered into the tank from a hose reel & locked in position for the cleaning cycle. In larger tanks the nozzle can be fixed at 2 or 3 different heights.



3D tank cleaning nozzle



Hosereel to lower/raise tank nozzle



HPS2200EC unit



HPS1000ES unit in a canopy

This information is intended to be a guide only. The required pump size & performance can vary depending on many factors including rate of work required, hardness of deposit or work piece, operator skill, site access etc.

### Hughes Pumps Limited

Spring Gardens, Washington, West Sussex, RH20 3BS UK  
**Tel:** +44 (0) 1903 892358 **Fax:** +44(0) 1903 892062  
**www.hughes-pumps.co.uk** **sales@hughes-pumps.co.uk**



Certificate Number 4257

In line with the Company's policy of research and development, alterations in design, dimensions and appearance are incorporated from time to time in order to ensure that important developments are included at the earliest opportunity. The Company, therefore, reserves the right to alter design, dimensions etc without notice.