

Application Data

Methanol/glycol injection



Benefits

- Pumps generally in accordance with API 674
- 3 & 5 cylinder pump output is very smooth, improved further by using pulsation dampers
- Pumpsets can be packaged for use in Zone 1 & 2 hazardous areas
- Pumps/pumpsets can be supplied ATEX compliant
- Pumpsets can be packaged for extreme temperature use (-20°C to +50°C)
- Fixed or variable speed electric motors available
- Systems are fully works tested
- Factory Acceptance Testing (FAT) is possible

General Description

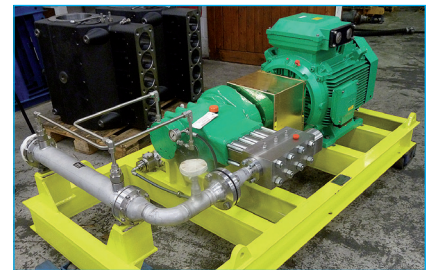
Methanol is mainly used for dehydration & de-icing in the oil & gas industry. Methanol is injected continuously & intermittently. It prevents the formation of hydrates, mainly in offshore sources, & lowers the freezing point of water percentages during oil & gas transport.

Gas, for example, stored in underground caverns, absorbs moisture from the surrounding salt dome & this requires treatment. Glycol is mainly used to reduce the moisture content in gas. Various types of glycol (MEG, TEG, DEG) are used for this purpose, allowing for the compression & further transport of the gas.

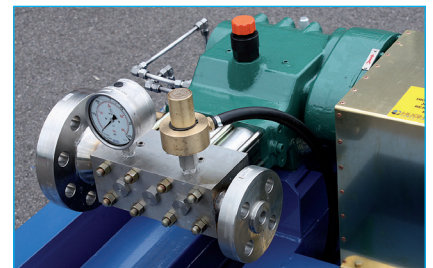
A range of pump sizes are available with a range of flow rates & pressure ratings to suit the requirement of any individual well.

Hughes Pumps offer bareshaft pumps for system builders or custom designed packages suited for methanol & glycol injection. The pumps are extremely efficient & incorporate a high degree of safety.

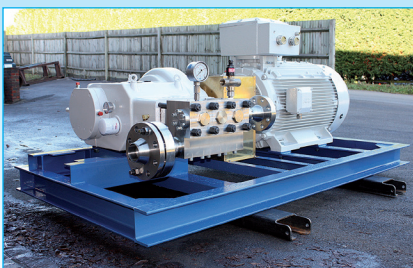
Hughes Pumps have extensive experience in supplying pumps for methanol/glycol injection to companies including MODEC, Tullow Ghana, Lewa, Norsk Hydro & Saga Petroleum AS.



HPS1000 injection pump for Petronas



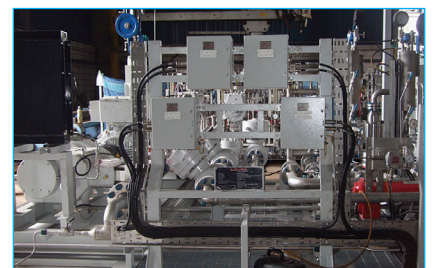
HPS650 injection pump for Lewa



HPS3000 methanol pump, 10m³/hr at 465bar



Twin HPS3000 pumps installed on the FPSO Kwame Nkrumah, operated by Tullow Ghana



Twin HPS3000 pumps for MODEC, Ghana

This information is intended to be a guide only. The required pump size & performance can vary depending on many factors including rate of work required, hardness of deposit or work piece, operator skill, site access etc.

Hughes Pumps Limited

Spring Gardens, Washington, West Sussex, RH20 3BS UK
Tel: +44 (0) 1903 892358 **Fax:** +44(0) 1903 892062
www.hughes-pumps.co.uk **sales@hughes-pumps.co.uk**



Certificate Number 4257

In line with the Company's policy of research and development, alterations in design, dimensions and appearance are incorporated from time to time in order to ensure that important developments are included at the earliest opportunity. The Company, therefore, reserves the right to alter design, dimensions etc without notice.