

# Application Data

## Pipeline testing



Typical Pumps & Performances		
Pump	Performance	Application
HPS3000	484lpm at 250bar (29m <sup>3</sup> /hr / 4385bpd at 3,625psi)	Pressure testing & flushing
HPS5000	806lpm at 250bar (48m <sup>3</sup> /hr / 7302bpd at 3,625psi)	Pressure testing & flushing

Hughes Pumps have a long history in supplying pumps for pipeline & process services to the oil, gas & petrochemical industries, mainly for pre-commissioning & commissioning services. We manufacture a wide range of pumps with the largest being able to pressure test 60" pipelines over tens of kilometres.

The plunger pumps are low speed, heavy duty & ruggedly designed for use in the harshest of environments, including the Middle East. 431 stainless steel is used as standard for the pumphead with 316 & Duplex stainless steel as options for pumping seawater, corrosive chemicals or hydrocarbons.

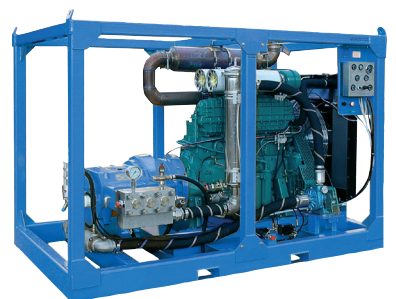
The pumps are versatile, allowing a contractor to use the same pump for flushing, pressure testing & water jetting pipelines as well as being suitable for water injection & well testing applications. If the pump is converted to 1000bar (14,500psi) it can also be used for hydro-milling of heavily scaled/blocked pipework systems.



HPS5000DC unit on a pipeline testing project



Pipeline monitoring station



HPS3000DC unit



HPS5000DC unit

### Benefits

- Pump sizes to suit the smallest to largest pipelines at pressures to 3000bar (43,500psi)
- Stainless steel pumpheads suitable for brackish or seawater
- Duplex pumpheads can be fitted for pumping corrosive chemicals
- Units can be packaged for extreme temperature use (-20°C to +50°C)
- Flow meters, chart recorders & data loggers available
- Same pump can be used for water injection/well testing
- Prime movers can be packaged suitable for use in hazardous areas
- The pump has a smooth output which can be further enhanced by using pulsation dampers

This information is intended to be a guide only. The required pump size & performance can vary depending on many factors including rate of work required, hardness of deposit or work piece, operator skill, site access etc.

### Hughes Pumps Limited

Spring Gardens, Washington, West Sussex, RH20 3BS UK  
**Tel:** +44 (0) 1903 892358 **Fax:** +44(0) 1903 892062  
**www.hughes-pumps.co.uk** **sales@hughes-pumps.co.uk**



Certificate Number 4257

In line with the Company's policy of research and development, alterations in design, dimensions and appearance are incorporated from time to time in order to ensure that important developments are included at the earliest opportunity. The Company, therefore, reserves the right to alter design, dimensions etc without notice.