

Application Data Shipyard



Ultrabar 24DC with twin gun operation, 2750bar

Typical Pumps & Performances		
Pump	Performance	Application
HPS650	50lpm at 300bar (13gpm at 4,350psi)	Wash down of ships hulls prior to grit blasting (per gun)
HPS1000	40lpm at 1000bar (10gpm at 14,500psi)	Water blasting to remove loose coatings/corrosion, typically from ships decks
Ultrabar 24	23lpm at 2750bar (6.1gpm at 40,000psi)	Surface preparation of hull & decks to remove all coatings/corrosion. Using 2 jetting guns or a crawler

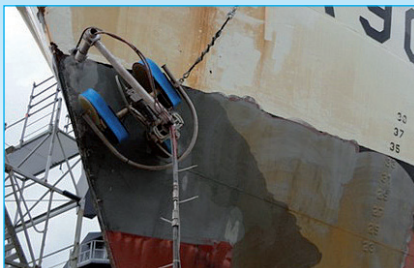
Water jetting is widely used in the ship repair & marine industries.

300bar is used to remove marine growth & salt deposits prior to grit blasting. Larger pumps can be specified to allow multiple jetting guns to be used simultaneously.

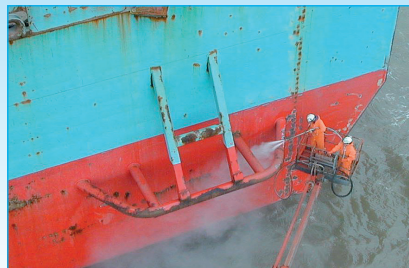
700-1000bar will remove loose coatings & corrosion, leaving sound coatings intact, ready for repainting if total coating removal is not required. It is often said that if 1000bar does not remove the coating then it is

sound enough to paint over.

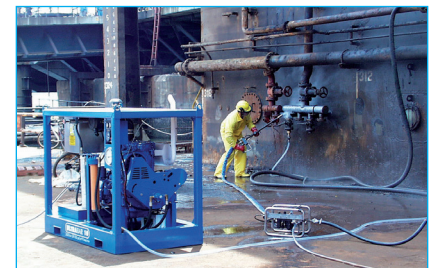
2750bar (UHP) will remove all coatings & corrosion back to white metal. Marine paint manufacturers have developed paints to apply to hydro-blasted surfaces & actively promote this method as it removes all chlorides & provides the best possible surface for recoating.



Ultrabar 24DC unit with Verti-Blast crawler



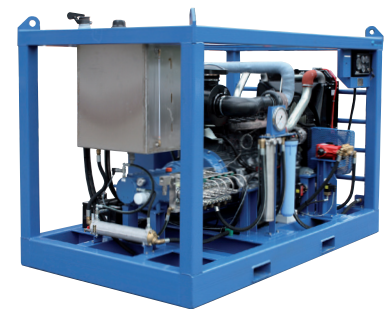
Surface preparation on a ships hull



Ultrabar 10DC unit in a floating dock

Benefits of Water Jetting

- Dust free allowing other trades to work in the vicinity
- Minimal waste disposal, 98% less than grit blasting
- Environmentally friendly
- No contamination of sensitive rotating equipment
- Removes all chlorides from substrate leaving a perfect surface for new paint
- Unlike grit blasting does not profile steel so does not trap chloride contaminants in the substrate
- Minimal water consumption, most of which evaporates when using UHP
- Reduces time during dry-docking
- Sheetting not required
- Can be used in wet & windy conditions
- The pump is versatile & can be used for other cleaning & cutting applications



Ultrabar 24DC unit

This information is intended to be a guide only. The required pump size & performance can vary depending on many factors including rate of work required, hardness of deposit or work piece, operator skill, site access etc.

Hughes Pumps Limited

Spring Gardens, Washington, West Sussex, RH20 3BS UK
Tel: +44 (0) 1903 892358 **Fax:** +44(0) 1903 892062
www.hughes-pumps.co.uk **sales@hughes-pumps.co.uk**



In line with the Company's policy of research and development, alterations in design, dimensions and appearance are incorporated from time to time in order to ensure that important developments are included at the earliest opportunity. The Company, therefore, reserves the right to alter design, dimensions etc without notice.