

HP220 DCT HP Water Jetting Unit



Doosan PU086T Engine (140kW/188hp)
65lpm at 1000bar (17gpm at 14,500psi)
49lpm at 1400bar (13gpm at 20,300psi)
Doosan PU086TI Engine (197kW/265hp)
83lpm at 1000bar (22gpm at 14,500psi)
62lpm at 1400bar (16gpm at 20,300psi)

Refer to the HP220 pump data sheet for alternative performances

HP220 DCT, diesel driven, site trailer (trolley) mounted crashframe, High Pressure water jetting unit, suitable for a wide range of applications. Simple mechanical engine suitable for use in non-regulated regions of the world, making this unit very easy to operate and maintain.

Suitable for single or twin gun / footvalve operation. Applications include surface cleaning, descaling, hydro-demolition, heat exchanger / pipe cleaning, vessel cleaning, subsea cleaning and more.

Dimensions

2.8m long x 1.5m wide x 2.5m high
(110" long x 59" wide x 98" high)

Weight

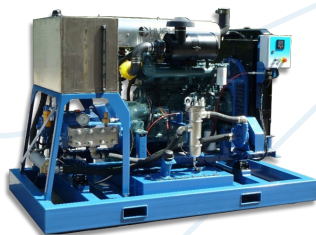
2,800kg
(6,160lb)

Features

- HP220 pump with pressure lubrication & oil cooling
- Stainless steel pumphead, solid ceramic or carbide plungers, integral gearbox & SAE engine adaptor
- Transducer for display of discharge pressure & automatic over-pressure shutdown
- Burst disc assembly
- Doosan 6 cylinder, mechanical engine suitable for use in non-regulated regions of the world (not Europe/North america)
- Simple auto-shutdown control panel.
- Pump switches for low inlet pressure, low oil pressure & high oil temperature
- Stainless steel water tank, boost pump & dual filtration
- Manual pressure adjusting valve
- Fabrications are grit blasted & powder coated with a zinc rich primer & durable topcoat suitable for use in corrosive environments

Build Options

- Spark arresting exhaust silencer
- Chalwyn valve
- Pneumatic control valve c/w compressor
- The modular design allows any combination of chassis to be configured including Skids, Crashframes, Site Trailers (Trolleys), Road Trailers, with or without Enclosures
- Mounted in a 10' container (standard or DNV)
- Alternative engines (Tier 3, 4 & 5)
- Full range of accessories for all applications



Skid option



Crashframe option



Road trailer option

Hughes Pumps Limited
Spring Gardens,
Washington, West Sussex,
RH20 3BS
United Kingdom

Telephone +44 (0) 1903 892358
Email sales@hughes-pumps.co.uk
Web www.hughes-pumps.co.uk



Certification number 4257



Manufactured in the UK since 1970

In line with the company's policy of research and development, alterations in design, dimensions and appearance are incorporated from time to time in order to ensure important developments are included at the earliest opportunity. The Company, therefore, reserves the right to alter design, dimensions etc without notice.