

HP300 DC T5

HP Water Jetting Unit



Tier 3 engine shown

Volvo TAD 884VE Engine (230kW/308hp)

119lpm at 1000bar
(31.6gpm at 14,500psi)

74lpm at 1400bar
(19.7gpm at 20,300psi)

Refer to the HP300 pump data sheet for alternative performances

HP300 DC crashframe mounted, diesel driven, High Pressure water jetting unit.

Tier 5 engine suitable for use in Europe & the US. Very easy to operate and maintain.

Applications include surface cleaning, descaling, hydro-demolition, heat exchanger / pipe cleaning, vessel cleaning, subsea cleaning and more.

Dimensions (approx.)

3.0m long x 1.6m wide x 2.1m high
(118" long x 63" wide x 83" high)

Weight (approx.)

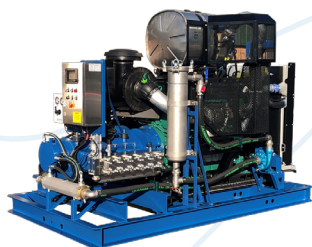
3,500kg
(7,700lb)

Features

- HP300 pump with pressure lubrication & oil cooling
- Stainless steel pumphead, solid carbide plungers, integral gearbox & SAE engine adaptor
- Transducer for display of discharge pressure & automatic over-pressure shutdown
- Burst disc assembly
- Volvo TAD 884VE, Tier 5, emissions compliant engine
- Comprehensive but simple auto-shutdown control panel.
- Automatic throttle to reduce engine speed to idle speed when pump is off pressure to reduce noise, water & fuel consumption
- Pump switches for low inlet pressure, low oil pressure & high oil temperature
- Stainless steel water tank, boost pump & dual filtration
- Pneumatic pressure adjusting valve c/w compressor
- Fabrications are grit blasted & powder coated with a zinc rich primer & durable topcoat suitable for use in corrosive environments

Build Options

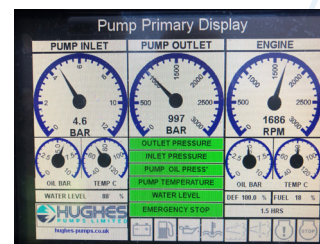
- Spark arresting exhaust silencer
- Chalwyn valve
- Remote control (wired)
- The modular design allows any combination of chassis to be configured including Skids, Crashframes, Site Trailers (Trolleys), with or without Enclosures
- Mounted in a container (standard or DNV)
- Alternative engines (for non-compliant regions or Tier 3)
- Full range of accessories for all applications



Skid option
(no water tank)



Site trailer option



Control panel

Hughes Pumps Limited
Spring Gardens,
Washington, West Sussex,
RH20 3BS
United Kingdom

Telephone +44 (0) 1903 892358
Email sales@hughes-pumps.co.uk
Web www.hughes-pumps.co.uk



Certification number 4257



Manufactured in the UK since 1970

In line with the company's policy of research and development, alterations in design, dimensions and appearance are incorporated from time to time in order to ensure important developments are included at the earliest opportunity. The Company, therefore, reserves the right to alter design, dimensions etc without notice.