

Ultrabar 30 DC

UHP Water Jetting Unit



Doosan PU086T Engine (140kW/188hp)
40lpm at 2000bar (10.6gpm at 29,000psi)
27lpm at 2800bar (7.1gpm at 40,600psi)
Doosan PU086TI Engine (197kW/265hp)
44lpm at 2000bar (11.6gpm at 29,000psi)
30lpm at 2800bar (7.9gpm at 40,600psi)

Refer to the Ultrabar 30 pump data sheet for alternative performances

Ultrabar 30 DC, diesel driven, crashframe mounted, High Pressure water jetting unit, suitable for a wide range of applications. Simple mechanical engine suitable for use in non-regulated regions of the world, making this unit very easy to operate and maintain.

Suitable for single or twin gun / footvalve operation. Applications include surface cleaning, descaling, hydro-demolition, heat exchanger / pipe cleaning, vessel cleaning, subsea cleaning and more

Dimensions

2.6m long x 1.5m wide x 1.9m high
(102" long x 59" wide x 75" high)

Weight

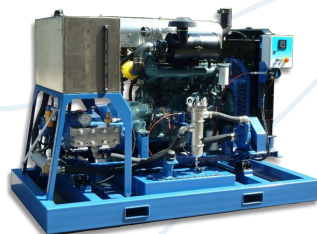
2,600kg
(5,720lb)

Features

- Ultrabar 30 pump with pressure lubrication & oil cooling
- Integral gearbox & SAE engine adaptor
- Modular fluid head assembly allows easy maintenance & troubleshooting on individual cylinders.
- Solid carbide plungers & self-adjusting seals.
- Transducer for display of discharge pressure & automatic over-pressure shutdown.
- Burst disc assembly
- Doosan 6 cylinder, mechanical engine suitable for use in non-regulated regions of the world (not Europe/North America)
- Simple auto-shutdown control panel.
- Pump switches for low inlet pressure, low oil pressure & high oil temperature
- Stainless steel water tank, boost pump & dual filtration
- Stainless steel water tank, boost pump & dual filtration (10 & 1 micron)
- Fabrications are grit blasted & powder coated with a zinc rich primer & durable topcoat suitable for use in corrosive environments

Build Options

- Spark arresting exhaust silencer
- Chalwyn valve
- Pneumatic control valve c/w compressor
- The modular design allows any combination of chassis to be configured including Skids, Crashframes, Site Trailers (Trolleys), Road Trailers, with or without Enclosures
- Mounted in a 10' container (standard or DNV)
- Alternative engines (Tier 3, 4 & 5)
- Full range of accessories for all applications including handheld jetting guns, surface preparation robots & tube cleaning (manual & automated)



Skid option



Site trailer option



Road trailer option

Hughes Pumps Limited
Spring Gardens,
Washington, West Sussex,
RH20 3BS
United Kingdom

Telephone +44 (0) 1903 892358
Email sales@hughes-pumps.co.uk
Web www.hughes-pumps.co.uk



Certification number 4257



Manufactured in the UK since 1970

In line with the company's policy of research and development, alterations in design, dimensions and appearance are incorporated from time to time in order to ensure important developments are included at the earliest opportunity. The Company, therefore, reserves the right to alter design, dimensions etc without notice.